

Approved to treat all severities of plaque psoriasis; and active psoriatic arthritis

Make today your moment

Here's how to get started on Otezla



Otezla[®]
(apremilast) 30mg
tablets



For commercially insured patients

Why wait?

**Enroll in the Otezla Co-Pay Program* and pay as
little as \$0 out of pocket**

*Eligibility criteria and program maximums apply.
See AmgenSupportPlus.com/copay-terms for full Terms and Conditions.



SCAN TO ENROLL

APPROVED USES

Otezla[®] (apremilast) is a prescription medicine used to treat adult patients with:

- Plaque psoriasis for whom phototherapy or systemic therapy is appropriate.
- Active psoriatic arthritis.

SELECT IMPORTANT SAFETY INFORMATION

You must not take Otezla if you are allergic to apremilast or to any of the ingredients in Otezla.

Please [click here](#) for Full Important Safety Information.

CO-PAY CARD

TAKING OTEZLA

RESULTS

SIDE EFFECTS

SUPPORT & SAFETY

Ready to start your Otezla journey?

Take these 2 key steps now



1

Have your co-pay card ready
to pay as little as \$0* for Otezla



If you've already enrolled in the Otezla Co-Pay Program,* it was sent to you in **an email**. Take a screenshot of it and make sure it's easy to find—you'll need it when the specialty pharmacy calls!



If you haven't enrolled yet (or if the email didn't get to you), **scan to enroll** in the Otezla Co-Pay Program now. Regardless of your household income, you may still be eligible for co-pay savings.



Scan to enroll now

*Eligibility criteria and program maximums apply. See AmgenSupportPlus.com/copay-terms for full Terms and Conditions.

Medicaid, Medicare, uninsured or underinsured?

For those patients who may not be eligible for the Otezla Co-Pay Program, we're still here to support you, no matter your financial situation. Call **1-844-4OTEZLA (1-844-468-3952)** to access information about how to fill your prescription and lower your out-of-pocket costs.

2

Don't miss the call from your specialty pharmacy



Once your doctor has given your prescription to a specialty pharmacy, they will call you to arrange delivery of Otezla.



The **ONLY** way to receive your Otezla is to answer **the specialty pharmacy's call**. If you don't, your medication won't be delivered.



Save your specialty pharmacy's contact in your phone. If they don't call within a week, be sure to reach out to your doctor.



Your Otezla will be on its way to your door

Please [click here](#) for Full Important Safety Information.

Otezla is a pill that treats plaque psoriasis where it starts

from within



Plaque psoriasis is an autoimmune disease that causes inflammation inside the body that leads to plaques you see on your skin.



Topicals can provide symptom relief but do not reduce inflammation inside the body.



Otezla reduces inflammation to help you achieve clearer skin after just 4 months—with no needle and no mess.

The exact way in which Otezla helps improve symptoms isn't completely understood.

“

Applying topicals took a lot of time out of my day... Now that I'm on Otezla, I no longer have to apply sticky and messy topicals. Otezla is a pill.”

Genine

Actual patient compensated for her time.



You can start taking Otezla right away

no routine blood tests required

Getting Started

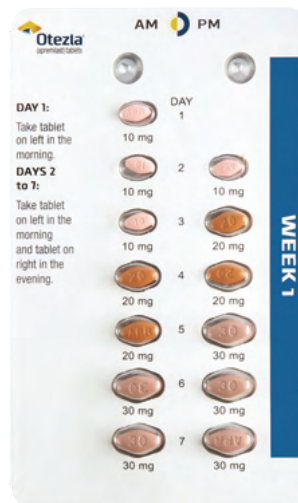
You may have received a treatment initiation pack in the doctor's office so you can begin treatment today. The rest of your prescription will be filled through a specialty pharmacy.

Taking Otezla

Otezla is a pill you take twice a day, once in the morning and once at night. People with severe kidney disease will take one pill a day.

Using your pill pack

Your Otezla will come in an easy-to-follow pill pack that will help you follow a schedule for when and how to take your medicine. People with severe kidney disease will follow a different schedule.



Adjusting to Otezla

Your dose will titrate, or increase, over the first 5 days of treatment until you reach the recommended dose. This will help reduce possible side effects in the digestive system. If you miss a dose, talk to your doctor about when to take your next one. Don't double up your dose.

	Day 1	Day 2	Day 3	Day 4	Day 5	Day 6 & Beyond
AM	10 mg	10 mg	10 mg	20 mg	20 mg	30 mg
PM	—	10 mg	20 mg	20 mg	30 mg	30 mg

- You can take Otezla with or without food. Do not crush, split, or chew the pill. Otezla should be stored below 86° F
- Be sure to take Otezla as directed by your doctor

SELECT IMPORTANT SAFETY INFORMATION

Otezla can cause allergic reactions, sometimes severe. Stop using Otezla and call your healthcare provider or seek emergency help right away if you develop any of the following symptoms of a serious allergic reaction: trouble breathing or swallowing, raised bumps (hives), rash or itching, swelling of the face, lips, tongue, throat or arms.

Please [click here](#) for Full Important Safety Information.

 **Otezla**[®]
(apremilast) 30mg tablets

You can see results after just 4 months

But keep track of any progress you notice sooner

It's time for less itching and less covering up

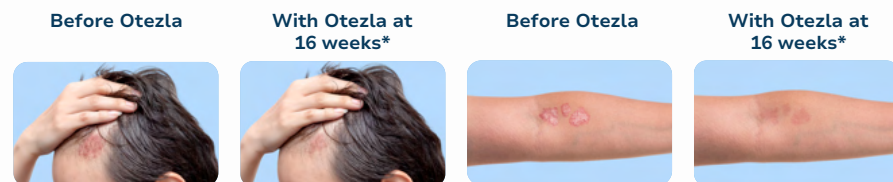
In a study of adults with mild to moderate plaque psoriasis:

5x more people saw clearer skin with reduced itching and flaking

Out of 595 patients, 22% of those taking Otezla achieved clearer skin after 4 months compared to 4% of those on placebo.

2x more people had more good hair days with less scalp psoriasis

Out of 411 people, 44% of those taking Otezla saw improvement in their scalp psoriasis after 4 months compared to 17% of those on placebo.



*Not actual Otezla patients. These images are used for illustrative purposes to show possible before and after effects of treatment for mild to moderate plaque psoriasis patients. Not everyone responds to Otezla. Those who do may respond differently.

SELECT IMPORTANT SAFETY INFORMATION

Otezla is associated with an increase in depression. In clinical studies, some patients reported depression, or suicidal behavior while taking Otezla. Some patients stopped taking Otezla due to depression. Before starting Otezla, tell your doctor if you have had feelings of depression, or suicidal thoughts or behavior. Be sure to tell your doctor if any of these symptoms or other mood changes develop or worsen during treatment with Otezla.

Please [click here](#) for Full Important Safety Information.

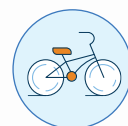
If you've been prescribed Otezla for psoriatic arthritis, you can also expect the following after 4 months:



Reduced joint swelling and tenderness



Reduced joint pain



Otezla could improve your ability to perform day-to-day physical activities

“

I'm grateful for the results I've seen on this treatment.”

Cindy

Actual patient compensated for her time.



Everyone's experience is different

Otezla takes time to work, which means you may not see results right away. However, some people saw results **after just 4 months**.



What to expect after starting Otezla



The first few weeks on Otezla

All medications come with some risk of side effects, and Otezla is no different.

These side effects can include diarrhea and nausea which usually occur during the first few weeks of treatment. Diarrhea and nausea tended to resolve within 30 days of onset.

If you experience discomfort, you can contact your doctor to help manage.

Other side effects include:*

- Headache and tension headache
- Common cold
- Upper respiratory tract infection

*These are not all the possible side effects with Otezla. Ask your doctor about potential side effects, and be sure to let them know about any side effects that bother you or don't go away.

“

It's totally normal to experience some stomach symptoms, especially within the first weeks of treatment. **My side effects decreased over time. I'm glad I stuck with it.**”

Pat

Actual patient compensated for his time.



Scan to learn more about side effects

SELECT IMPORTANT SAFETY INFORMATION

Otezla can cause severe diarrhea, nausea, and vomiting, especially within the first few weeks of treatment. Use in elderly patients and the use of certain medications with Otezla appears to increase the risk of complications from having severe diarrhea, nausea, or vomiting. Tell your doctor if any of these conditions occur.

Please [click here](#) for Full Important Safety Information.

 **Otezla**[®]
(apremilast) 30mg tablets



Need additional help? We're here to support you if you need it.



With Otezla, you don't have to do it alone. Amgen® SupportPlus has a team of dedicated Amgen® Nurse Partners* to offer supplemental support and provide information about resources to help you start Otezla.

Our Nurse Partners can be reached at
1-844-4OTEZLA (1-844-468-3952)
8 AM – 8 PM ET, Monday – Friday.

*Amgen Nurse Partners are not part of your treatment team and do not provide medical advice, nursing, or case management services. Patients should always consult their healthcare providers regarding medical decisions or treatment concerns.

Please [click here](#) for Full Important Safety Information.

IMPORTANT SAFETY INFORMATION

APPROVED USES

Otezla® (apremilast) is a prescription medicine used to treat adult patients with:

- Plaque psoriasis for whom phototherapy or systemic therapy is appropriate.
- Active psoriatic arthritis.

IMPORTANT SAFETY INFORMATION

You must not take Otezla if you are allergic to apremilast or to any of the ingredients in Otezla.

Otezla can cause allergic reactions, sometimes severe. Stop using Otezla and call your healthcare provider or seek emergency help right away if you develop any of the following symptoms of a serious allergic reaction: trouble breathing or swallowing, raised bumps (hives), rash or itching, swelling of the face, lips, tongue, throat or arms.

Otezla can cause severe diarrhea, nausea, and vomiting, especially within the first few weeks of treatment. Use in elderly patients and the use of certain medications with Otezla appears to increase the risk of complications from having severe diarrhea, nausea, or vomiting. Tell your doctor if any of these conditions occur.

Otezla is associated with an increase in depression. In clinical studies, some patients reported depression, or suicidal behavior while taking Otezla. Some patients stopped taking Otezla due to depression. Before starting Otezla, tell your doctor if you have had feelings of depression, or suicidal thoughts or behavior. Be sure to tell your doctor if any of these symptoms or other mood changes develop or worsen during treatment with Otezla.

Some patients taking Otezla lost body weight. Your doctor should monitor your weight regularly. If unexplained or significant weight loss occurs, your doctor will decide if you should continue taking Otezla.

Some medicines may make Otezla less effective and should not be taken with Otezla. Tell your doctor about all the medicines you take, including prescription and nonprescription medicines.

The most common side effects of Otezla include diarrhea, nausea, upper respiratory tract infection, tension headache, and headache. These are not all the possible side effects with Otezla. Ask your doctor about other potential side effects. Tell your doctor about any side effect that bothers you or does not go away.

Tell your doctor if you are pregnant, planning to become pregnant or planning to breastfeed.

You are encouraged to report negative side effects of prescription drugs to the FDA. Visit www.fda.gov/medwatch, or call 1-800-332-1088.

Please [click here](#) for the Full Prescribing Information.



Welcome to the Otezla community of over 1 million people*



Scan to hear stories from actual patients just like you, and help others by sharing your own experience as you get started today.

“

When I first noticed the plaque psoriasis beginning to lessen, I was so excited and I was like... ‘It’s working!’”†

Michael

Actual patient compensated for his time.



*Estimates of patients treated reflect global data since launch (Apr 2014-Mar 2024; US=59% of data). Calculations based on observed drug utilization parameters and number of units distributed. Utilization patterns change over time to best represent current markets.

†Individual results may vary. Patients may experience clearer skin after 4 months of treatment.

IMPORTANT SAFETY INFORMATION

You must not take Otezla if you are allergic to apremilast or to any of the ingredients in Otezla.

Please [click here](#) for Full Important Safety Information.

AMGEN® © 2025 Amgen Inc. All rights reserved.
02/25 USA-407-84412



Otezla®
(apremilast) 30mg tablets